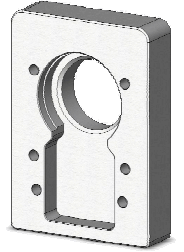
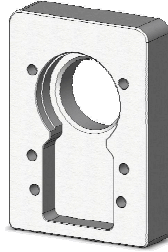
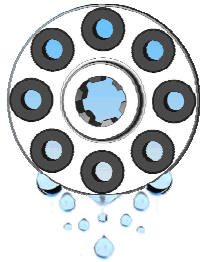
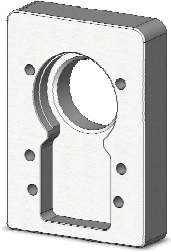
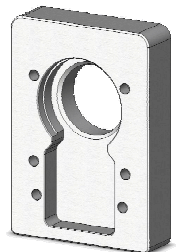
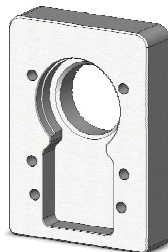
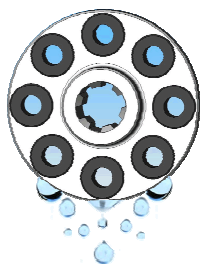
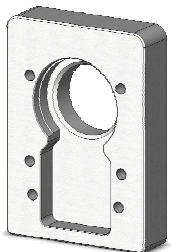




Marine/Irrigation Couplings and Adapters



Marine & Irrigation Couplings and Adapters



Hayes Manufacturing, Inc.

6875 U.S. 131

Fife Lake, MI 49633

Phone: (231) 879-3372 Fax: (231) 879-4330

Visit us at www.hayescouplings.com



Original Flywheel Couplings

Today, there is thousands of Hayes marine and irrigation couplings and adapters in service throughout the world. They are used in gas and tough diesel engine applications where torsional vibration occurs. Our flexible neoprene elements absorb vibration and reduce shock loads, while providing a steady dampening effect.

The couplings take up very little space while transmitting a surprising amount of torque. They're available with a wide variety of spline and bores & keys that come ready to bolt to your flywheel. The splines do not lock onto the shaft in order to allow for any axial movement. This is similar to a drive shaft assembly in automotive applications.

All components have been designed for maximum life (when operated at normal engine speeds, torque and alignment). Please call your local distributor or our factory for assistance.

Design Characteristics:

Steel Yellow Zinc (Trivalent by 1-1-07) Flywheel Plate

- Sturdy, steel plate for continuous load support.
- Yellow Zinc (Trivalent by 1-1-07) plating to protect against corrosive wear.

Adapters

- Hurth transmission
- SAE

Drive Hub

- Precision machined for consistent quality
- Heat-treated splines to prevent premature shaft wear
- Multiple hub lengths allow for easy installation in any standard SAE or non-standard application

Features and Advantages:

- Absorbs vibration and shock loads, lengthening the life of your pump components
- Provides a steady dampening effect under load
- Designed for maximum life (when operated at normal engine speeds, torque and alignment)
- Rugged steel construction
- **Eliminates human error with our easy, one-piece design (perfect for a production environment)!**
- -40° to +220°F operating temperatures
- Various series for standard SAE flywheels and non-standard flywheels (including engine housings)
- Competitively priced and normally in stock
- Spline lubrication packaged and provided by Hayes.

Applications:

- Water Pumps • Marine Transmissions • Sprayers • Gear Boxes • and more.
- Consult factory for applications not listed

CALL US TO DISCUSS YOUR SPECIFIC APPLICATION REQUIREMENTS

Hayes Manufacturing, Inc.

6875 U.S. 131

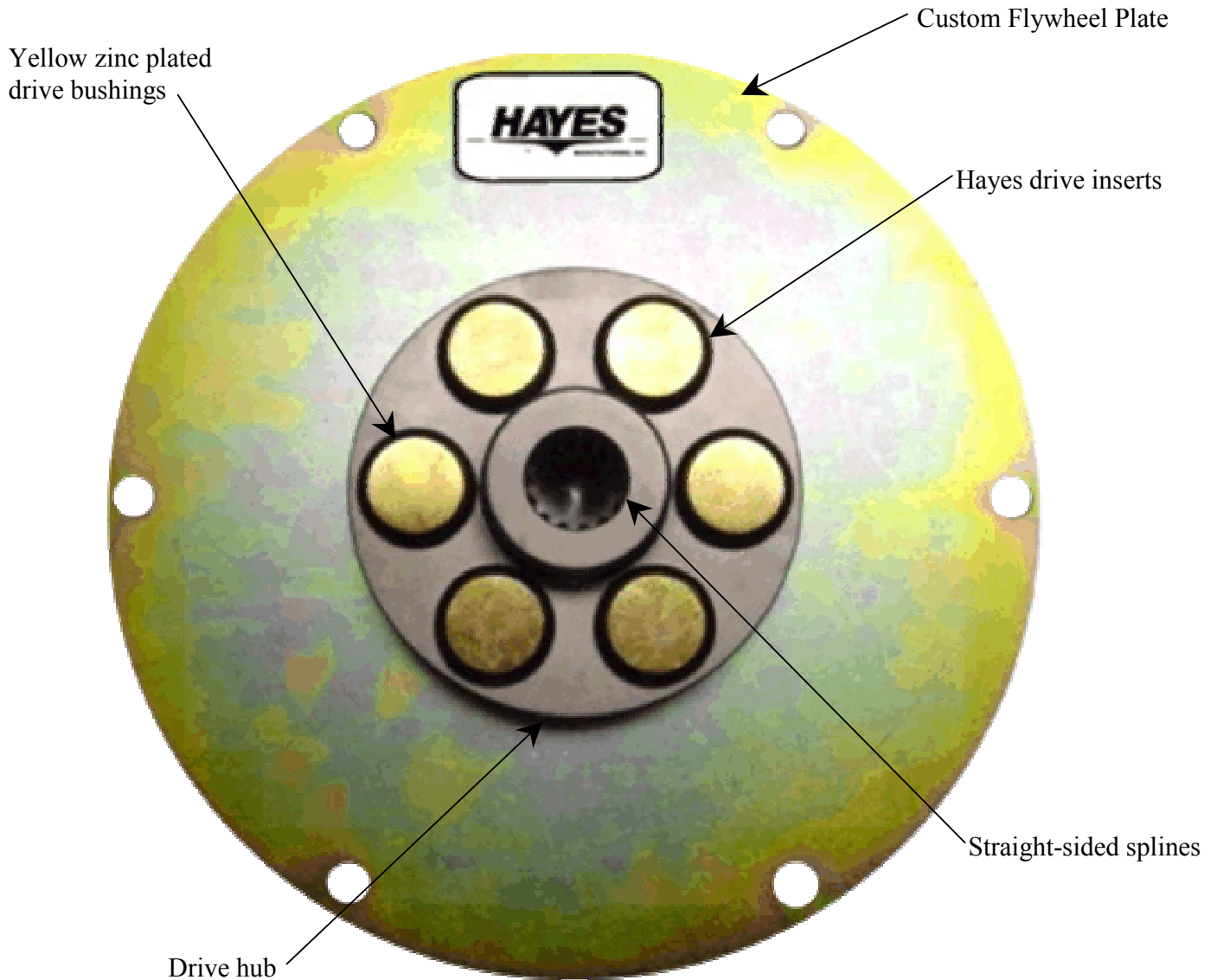
Fife Lake, MI 49633

Phone: (231) 879-3372 Fax: (231) 879-4330

Visit us at www.hayescouplings.com



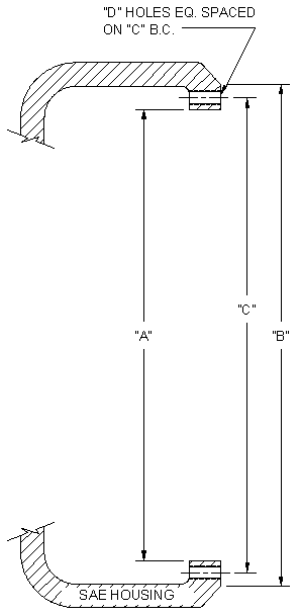
Irrigation Couplings (straight-sided)



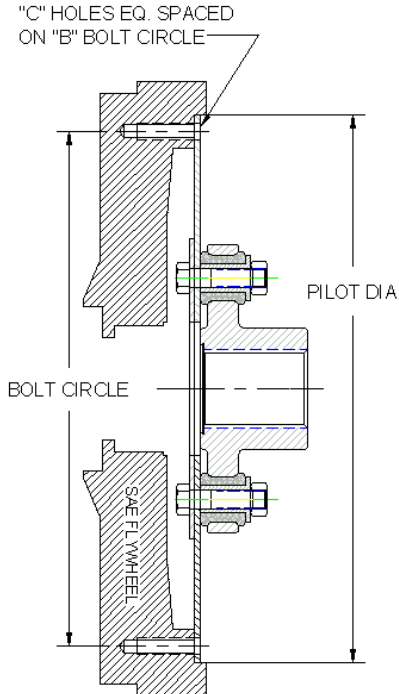
Hayes Manufacturing, Inc.
6875 U.S. 131
Fife Lake, MI 49633
Phone: (231) 879-3372 Fax: (231) 879-4330
Visit us at www.hayescouplings.com



Standard SAE Flywheel Coupling and Pump Mount Information



HAYES SAE PUMP MOUNTING PLATE DIMENSIONS						
HOUSING SIZE	"A" PILOT	"B" O.D.	"C" B.C.	PLATE THICKNESS	"D" MOUNTING PLATE HOLES	
					# OF HOLES	SIZE
1	20.125	21.750	20.875	1" OR 5/8"	12	31/64
2	17.625	19.250	18.375	1" OR 5/8"	12	27/64
3	16.125	17.750	16.875	5/8"	12	27/64
4	14.250	15.880	15.000	5/8"	12	27/64
5	12.375	14.000	13.130	5/8"	8	27/64
6	10.500	12.120	11.250	5/8"	8	27/64



HAYES SAE FLYWHEEL PLATE DIMENSIONS				
SAE FLYWHEEL SIZE J620	"A" O.D.	"B" B.C.	# OF HOLES	"C" HOLE SIZE
6-1/2	8.499	7.875	6	0.343
7-1/2	9.499	8.750	8	0.343
8	10.374	9.625	6	0.406
10	12.374	11.625	8	0.406
11-1/2	13.874	13.125	8	0.406
14	18.375	17.250	8	0.531
16	20.375	19.250	8	0.531

Hayes Manufacturing, Inc.

6875 U.S. 131

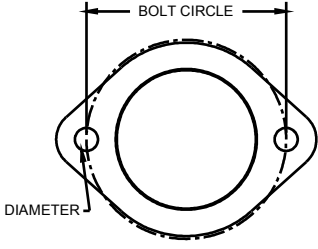
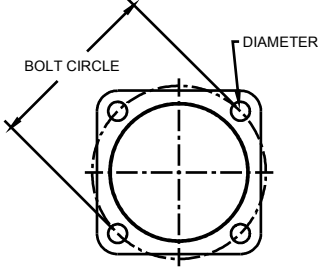
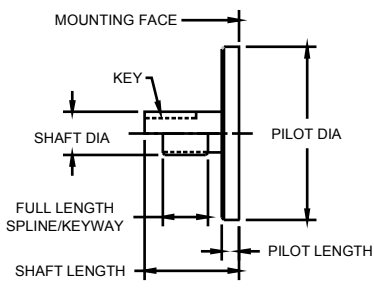
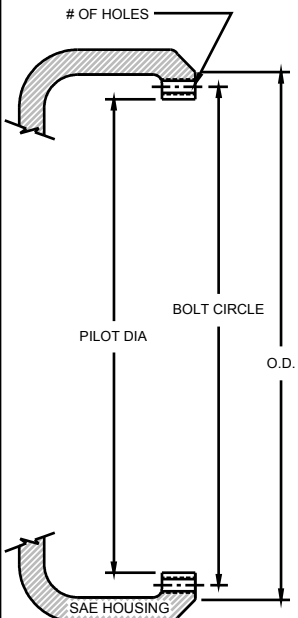
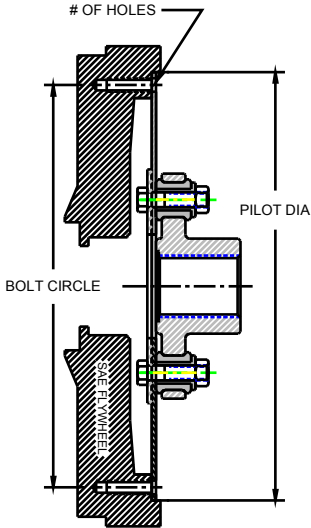
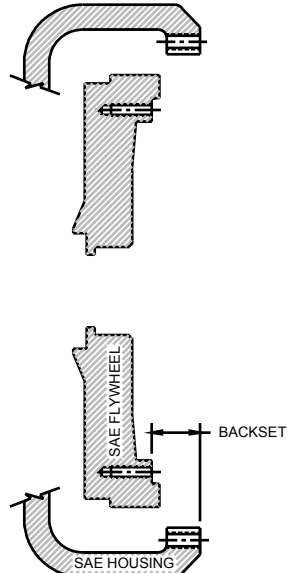
Fife Lake, MI 49633

Phone: (231) 879-3372 Fax: (231) 879-4330

Visit us at www.hayescouplings.com



Easy fill in the blank coupling specification (Just fill in then fax)

 <p style="text-align: center;"><u>2-BOLT PUMP FACE</u></p>	 <p style="text-align: center;"><u>4-BOLT PUMP FACE</u></p>
BOLT CIRCLE _____ DIAMETER _____	
<p><u>FLYWHEEL DATA</u></p> PILOT DIA _____ BOLT CIRCLE _____ # OF HOLES _____ <p><u>FLYWHEEL HOUSING DATA</u></p> PILOT DIA _____ BOLT CIRCLE _____ O.D. _____ # OF HOLES _____ <p><u>FLYWHEEL TO HOUSING</u></p> BACKSET _____	<p><u>STANDARD DATA</u></p> PILOT DIA _____ SHAFT DIA _____ SHAFT LENGTH _____ FULL KEY/SPLINE LENGTH _____ PILOT LENGTH _____ <p><u>SPLINE DATA</u></p> # OF TEETH _____ D.P. _____ P.A. _____ <div style="text-align: right; padding-top: 20px;">  <p style="text-align: center;"><u>PUMP SHAFT INFORMATION</u></p> </div>
	
	

Hayes Manufacturing, Inc.

6875 U.S. 131

Fife Lake, MI 49633

Phone: (231) 879-3372 Fax: (231) 879-4330

Visit us at www.hayescouplings.com